

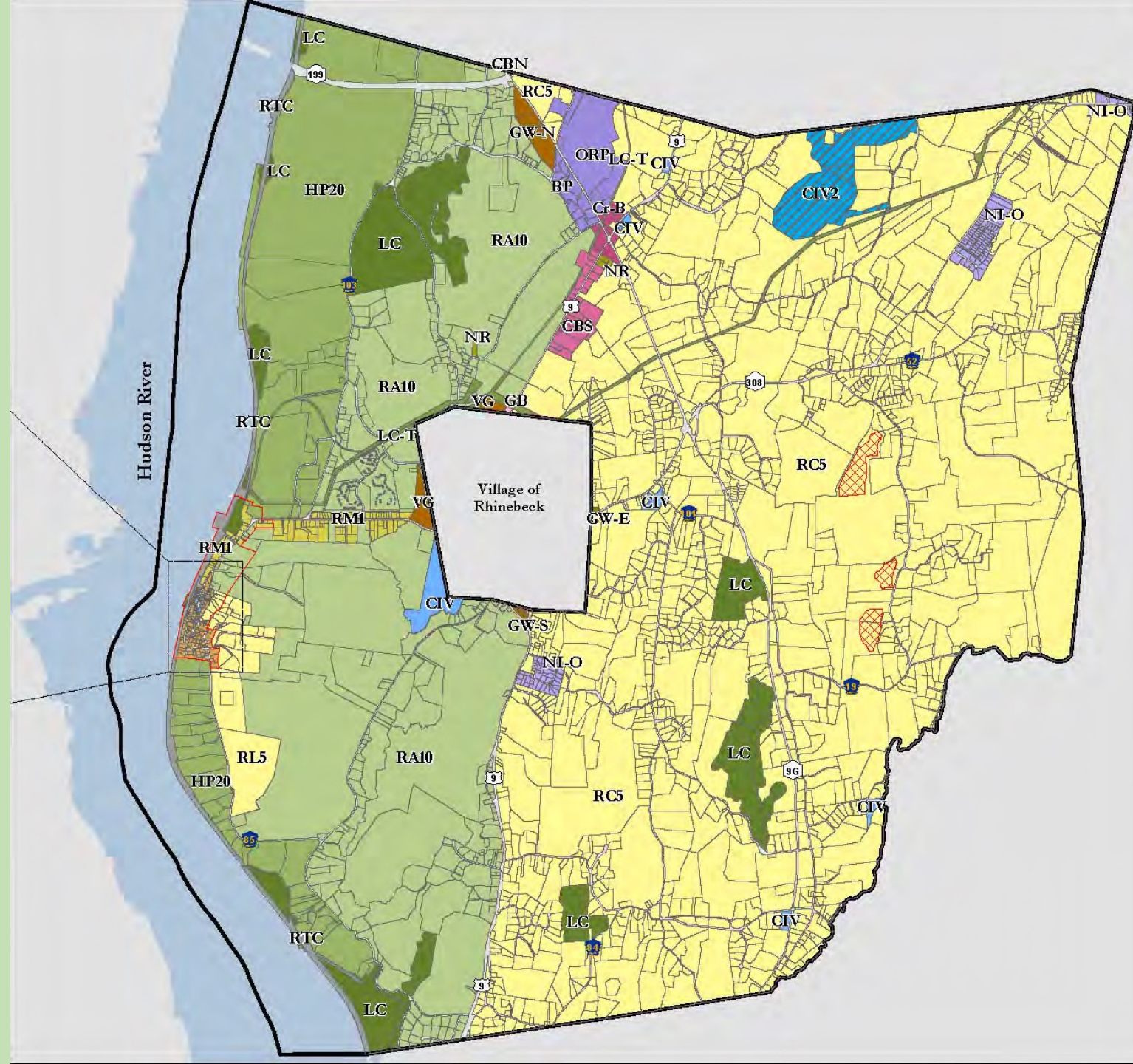


Welcome How Do We House the Future of Rhinebeck?

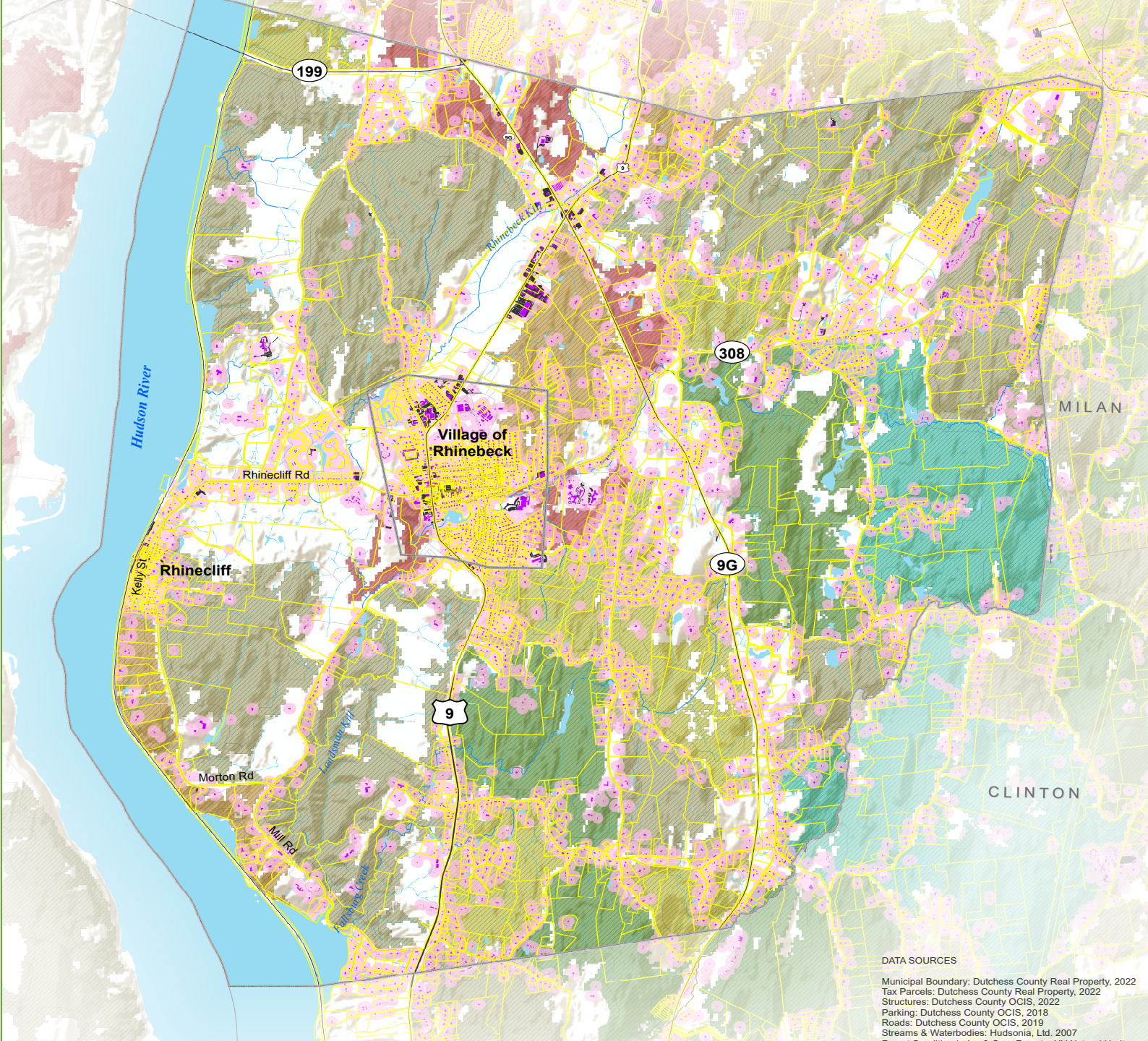
Session 2 Environmental, Zoning, and Market Forces: Concerns and Opportunities

April 14, 2024

Town of Rhinebeck Zoning



Natural Resources
Inventory / Forest Blocks



DATA SOURCES

Municipal Boundary: Dutchess County Real Property, 2022
Tax Parcels: Dutchess County Real Property, 2022
Structures: Dutchess County OCIS, 2022
Parking: Dutchess County OCIS, 2018
Roads: Dutchess County OCIS, 2019
Streams & Waterbodies: Hudsonia, Ltd. 2007

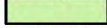
Centers and Greenspaces

Dutchess County,
New York



GREENSPACES

Contained Greenspaces



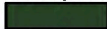
Outlying Lots
Over 5 Acres

Continuous Greenspaces



1,000+ Acres of
Active Farms and
Natural Habitat

Conserved Greenspaces



Public & Private
Protected Land

CENTERS

City, Village, & Town Centers



½-Mile
Walking Radius

Emerging Centers



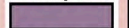
Potential or
Planned Centers

Hamlet Centers



2,000-Foot
Walking Radius

Suburban Development



Outlying Lots
Under 5 Acres

Greenway Corridors



Floodplains and
Wetland Systems

Greenway Routes



Major Roads, Trails
and Railroad Lines



Centers and Greenspaces Rhinebeck & Red Hook

